

Security Explorer

BENEFITS

- > Easily manage NTFS, Share and Registry Permissions
- > Enterprise wide security management from a central point
- > Backup and restore NTFS permissions
- > Grant, revoke, clone permissions for users and groups
- > View and modify security without requiring access
- > Export and report file, folder and share security
- > Automated search for user and group access to files and folders
- > Enterprise Scopes for logical management of multiple servers simultaneously
- > Full command line support if custom scripts are required
- > Easy to learn and use graphical interface

"It would take our company hours to complete what Security Explorer does in about five minutes. Without Security Explorer, we have to apply the changes to entire structures each folder at a time to make sure current permission sets are not compromised"

— Steven McCauley
PCOE System's Administrator
Mayne Group

Security Explorer is a powerful and comprehensive enterprise solution to inspect, document and manage Windows NT/2000/XP security on NTFS drives, Registry keys and file shares.

As file systems continue to grow, the permissions and security impact becomes increasingly complex. This creates an enormous burden for network administrators to maintain effective NTFS, Registry and file share security. Comprehensive and sophisticated tools are required to understand and address these security management issues.

Security Explorer is a solution that fills many gaps and takes over where native tools leave off in the area of managing NTFS, share and registry security settings. Security Explorer provides the enterprise tool administrators need to quickly identify, report on and correct permission problems – making your security management job significantly easier.

NTFS MANAGEMENT

Beginning with an intuitive interface, permissions are automatically presented as each folder or file is selected. Security Explorer allows **specific changes to be made without affecting any of the existing NTFS permissions**. Permissions changes can be made on individual files and folders or en-masse.

Security Explorer also provides security management of files and folders, administrators would normally see as "Access Denied." Instead, **Administrator Override** functionality provides complete management of all NTFS files and folders. Rather than recreate NTFS permissions during domain migrations, Security Explorer simply clones existing permissions to a new group or user.

SEARCH PERMISSIONS

It's one thing to go to a particular folder and make a permission change. But what if you have no idea where permissions have been assigned and need to make changes? Security Explorer provides the answer with the ability to **search a specified path for**

permissions assigned to a particular user or group. After viewing the results, permissions can be modified directly, and/or printed for reporting purposes.

SECURE THE REGISTRY

Now you can centrally manage registry permissions on your network. Using a simple navigation pane, similar to REGEDIT, Security Explorer lists both **explicit and inherited permissions**, giving the administrator a "bird's eye" view of registry security.

PROTECT SHARES

Security Explorer can **create/delete file shares**, as well as manage the permissions assigned to those shares.

SCALABLE TO THE ENTERPRISE

Security Explorer's management interface is not limited to management of one machine at a time; it supports the definition of **Enterprise Scopes** to include the NTFS, Share and Registry permissions of multiple Windows servers anywhere on your network. Once defined, these scopes allow administrators to make changes enterprise-wide by making a single modification to the scope and affecting multiple servers.

FAULT TOLERANT NTFS PERMISSIONS

With Security Explorer, administrators can **backup and restore their NTFS permissions**, providing the ability to recover permissions. Additionally, permissions can be exported to an ODBC-compliant database for reporting and backup.

COMMAND LINE SCRIPTING

Security Explorer includes several NTFS command-line utilities to allow Security Explorer to participate in your custom scripted solutions. The utilities allow the backup and restore of NTFS permissions, cloning NTFS permissions, exporting NTFS permissions, and adding/removing NTFS permissions.

COMPATIBILITY

Supported Management Platforms

Windows NT 4.0:
 Workstation, Server, Enterprise Edition
 Windows 2000:
 Professional, Server, Advanced Server
 Windows XP Professional
 Windows Server 2003:
 Standard, Server, Enterprise Edition

Recommended Hardware

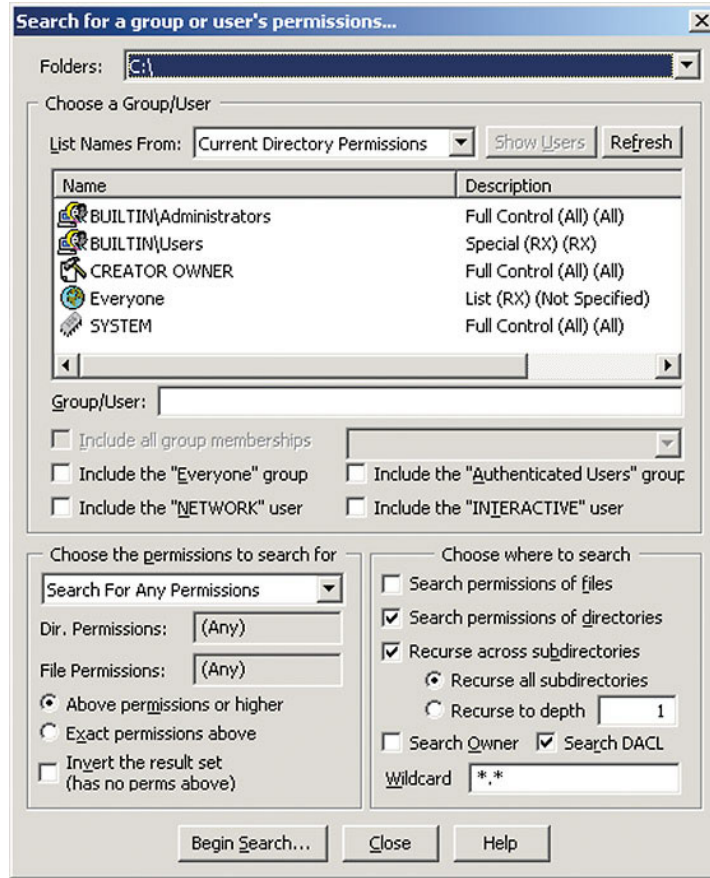
Pentium III or higher Processor, 256 MB RAM,
 25MB Free Hard Disk space.

Supported Managed Platforms

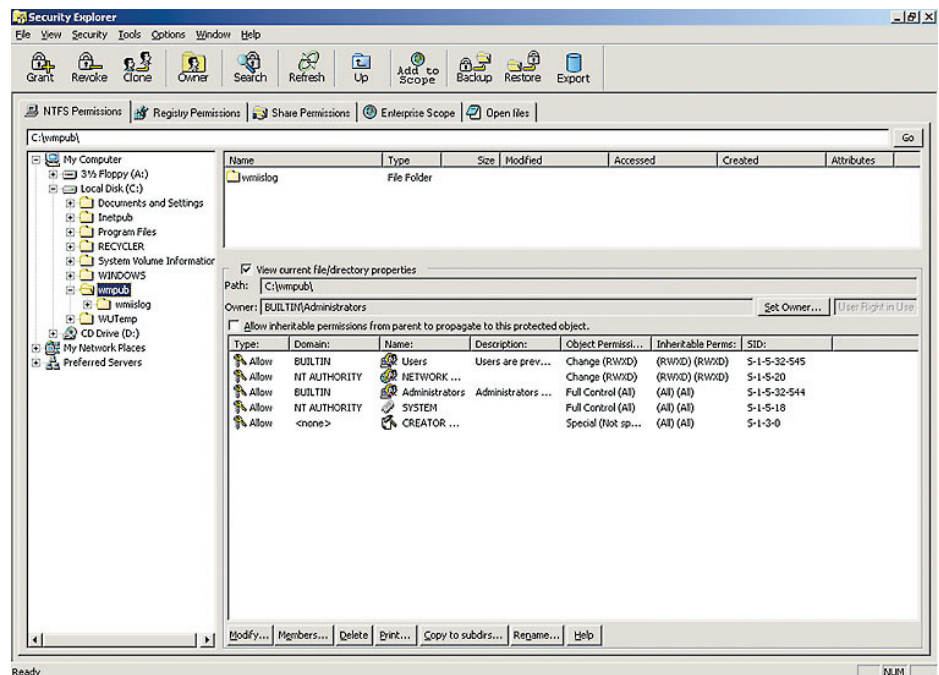
Windows NT 4.0:
 Workstation, Server, Enterprise Edition
 Windows 2000:
 Professional, Server, Advanced Server
 Windows XP Professional
 Windows Server 2003:
 Standard, Server, Enterprise Edition

Export Requirements

Microsoft Access 97 or later and/or
 Microsoft Excel 97 or later



Security Explorer's granular permissions search



Security Explorer makes it easy to inspect permissions

SPECIAL OFFER!

Go to scriptlogic.com/ebook to download the newest FREE eBooks with valuable guidance and real-world examples.

